

Dynamics

1	<i>ppp</i>	<i>pianississimo</i>	Extremely soft
2	<i>pp</i>	<i>pianissimo</i>	Very soft
3	<i>p</i>	<i>piano</i>	Soft
4-5	<i>mp</i>	<i>mezzopiano</i>	Comfortable singing voice
6-7	<i>mf</i>	<i>mezzoforte</i>	Comfortable singing voice
8	<i>f</i>	<i>forte</i>	Loud
9	<i>ff</i>	<i>fortissimo</i>	Very Loud
10	<i>fff</i>	<i>fortississimo</i>	Extremely Loud

Musical Definitions:

Crescendo: gradually becoming louder

Diminuendo: gradually becoming softer

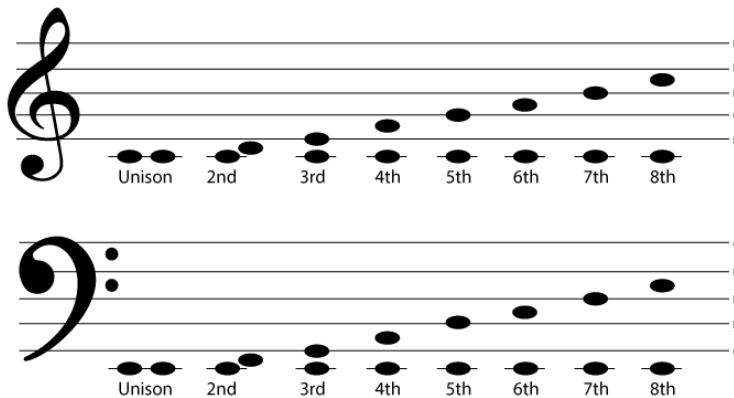
Resolution: A musical line or harmony that moves from dissonance to consonance.

Measure: A segment of time corresponding to a specific number of beats. Each measure is separated by a "bar line."

Double Bar Line: A musical notation signaling the end of the hymn.

Interval: The difference between two pitches. An interval may be described as:

- ✓ *vertical or harmonic* when it pertains to simultaneously sounding tones, or
- ✓ *horizontal or melodic* when it refers to tones sung or played one after the other.



Higher Pitch

